

## About Children's Railway



**25 Children's Railways**

**92 000 km** of main tracks unfolded length

**NUMBER OF GRADUATES**

**2017 – 1038 GRADUATES**

**2018 – 1129 GRADUATES**



**THE INFRASTRUCTURE IS REPRESENTED BY**

**80 locomotives**

**224 passenger cars**

**14 freight cars**



**TRACK WIDTH**

**750 MM**



**TRANSPORTED**

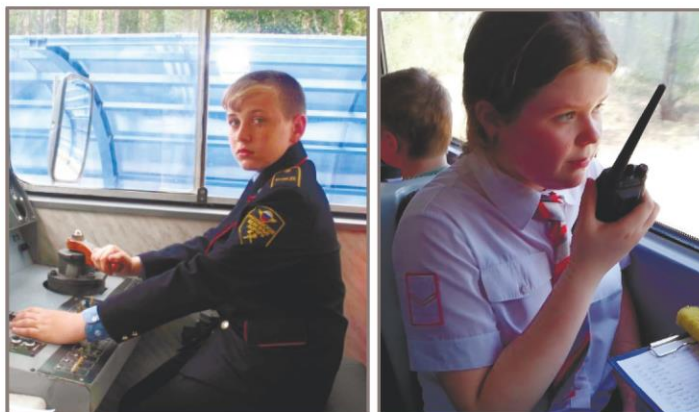
**2017 – 429,3 people**

**2018 – 509,8 people**



At first sight, CR is just an attraction, but it is actually not. The difference is that here everything is done by schoolchildren of 5–9 grades. Here they act as conductors, switchmen, station duty officers, dispatchers, and even a driver is also a school child. CR is a place where future railroad talents are born. During a three-year period, in winter, schoolchildren study the basics of railway business, while summer provides the young lovers of railways with a long-awaited opportunity to practice their knowledge.

We have developed a unique tool for training young railway lovers, that is an innovative diesel train with the electric power transmission and the ability to operate from traction batteries. This approach gives young railwaymen an opportunity to know what steam, electric, and multiple units are like.



**COUNTRY OF RAILWAYS**



205 Olkhovsky Per,  
Moscow, 105066, Russia  
Tel.: +7 (499) 262-73-62  
Fax: +7 (499) 262-12-10  
[www.pkbct.ru](http://www.pkbct.ru), [mail@pkbct.ru](mailto:mail@pkbct.ru)



**CHILDREN'S  
RAILWAY TRAIN  
CONCEPT**



Design Bureau of Russian Railways  
Locomotive Engineering Design Bureau



## Everyone will find their path



CR train and infrastructure ensure training of young railway officers in the following specialties:



### TRAIN DRIVER

Drive a real train

### DISPATCHER

Manage train traffic



### REPAIR ENGINEER

Repair a real train

### TRAIN MASTER

Manage a team



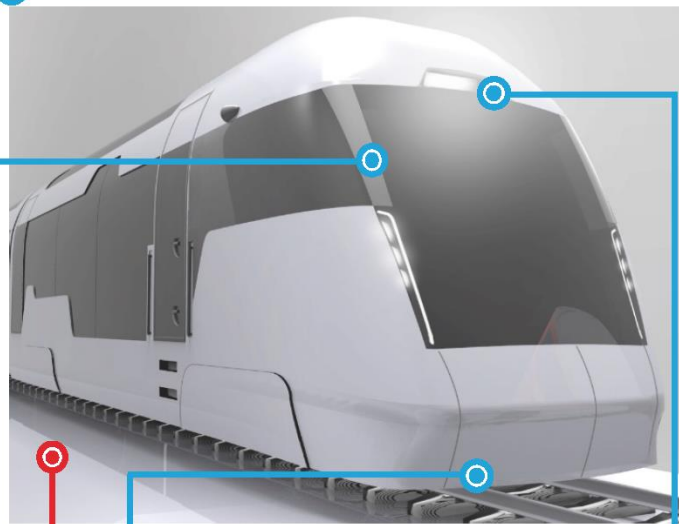
### TRAIN CONDUCTOR

Provide comfort during a trip

## The train catches attention



Reduction of blind spots increases operation safety



Bright LED lights make the train noticeable

Concealed coupling retains the aesthetics of the appearance

## Maximum comfort

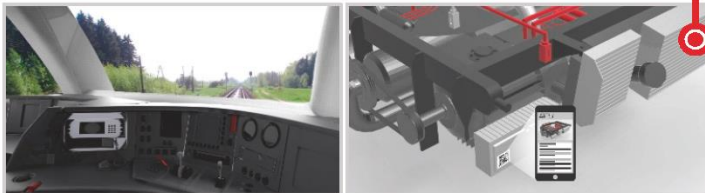


The car layout and the unique concept of seats allowed to place the seats facing windows and to provide wide aisles



Fully equipped and comfortable self-service area with vending machines

Places for people with disabilities



- Increased capacity cab
- Electrical power transmission
- Mechanical control system with protection against incorrect actions
- Tutorial multimedia with labels on equipment
- Equipment operation overview
- Collaboration of several professions



Doors allow getting on a train from high and low platforms, including for sedentary passengers



Closed car reduces noise and allows to conduct inspection



Cabin and car air conditioning



USB Type A devices charging



Audio system



Availability of Wi-Fi connection

Mobile services

